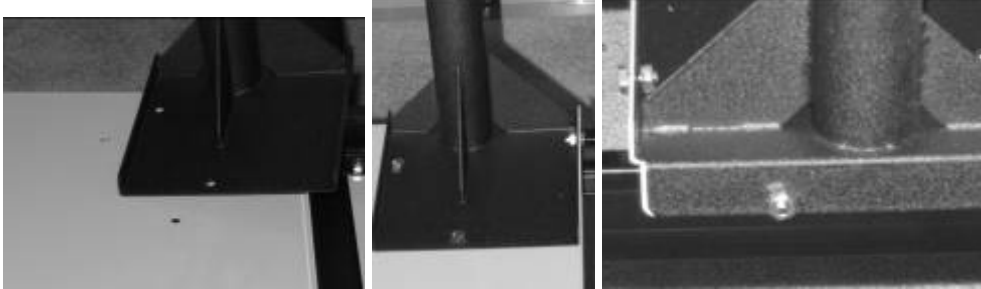


Speed Control/Laser Arm Mounting Instructions

Step 1- Attach the **Speed Control Mount** to the Carriage with **4 Bolts**. Place the **Speed Control Mount** onto the back left side of the **Carriage** and align the holes. Insert the **Bolts** into the holes from the top side of the **Carriage** and into the back flange. Move the **Carriage** forward to secure the **Nuts** from underneath. For the **Bolt** that goes into the left side of the **Carriage**: move the carriage back as far as it will go and place the bolt in from underneath and secure with the nut on the outside. If this Bolt is put on wrong the carriage will not move forward.



Step 2- Take four $\frac{1}{4}$ -20x1 $\frac{1}{2}$ " **Bolts** and place them through the four holes in the flange of the **Laser Stylus Mount** and then through the four holes in the **Speed Control Arm** then through the flange of the **Speed Control Mount**. Secure with 4 **Nuts**.



Step 3- Slide the **Speed Control** over the **Speed Control Mount** and align the holes so that the **Speed Control** is in a comfortable position. The **Speed Control** will slide forward and backward depending on how close you want the **Controller** to you or the sewing machine. Insert two $\frac{1}{4}$ -20x2 $\frac{1}{2}$ " **Bolt** and secure with **Nuts**.



Step 4- The **Foam Grip Handles** can be mounted on the **Speed Control** in two different locations. They can be mounted vertically or horizontally. Slide one **Bolt** through a hole, place **Foam Grip Handle** on and turn clock wise until tightened, repeat with other **Foam Grip Handle**.



Step 5- Loosen the screws of the bracket on the **Laser Stylus Mount** then slip the **laser** into the clamp from the top until the bottom is flush with the mount making sure the **laser** bottom is above the laser bracket and then tighten. Slide the brass tube over the **laser** (the brass tube will rest loosely on the laser). To turn the laser on or off, simply rotate the brass tube to depress the laser button.



Step 6- Assemble the **Magic Wand** by sliding the spring on the rod and then putting it through the hole in the **Laser Stylus Mount**. If the **Pattern Shelf** is set in the high position place the plastic tube on before the spring.

